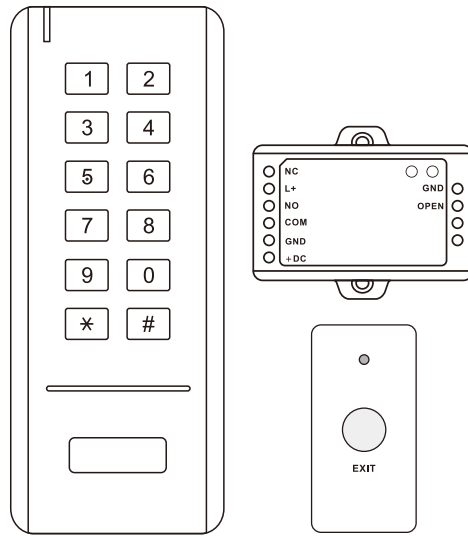




# SK3 - II

## Wireless Access Control



User Manual

## INTRODUCTION

The SK3-II is a single door wireless access control, consists of a wireless keypad, a mini controller and a wireless exit button. TEA + Rolling Code of encryption algorithm and the split design guarantees higher-secure.

The keypad can store 500 PIN / card users. Because of ultra low power consumption, the keypad and the exit button can work as long as one year (bases on 30 times/day), with just 3 units of AAA batteries and 1 unit Li-battery. It will remind people to replace batteries intelligently if low battery.

### Features

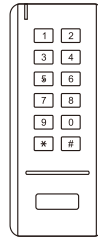
- > 500 PIN / card users
- > PIN length: 4~8 digits
- > 125KHz EM card
- > Communication frequency: 2.4G
- > Communication distance: 15m Max
- > Pulse mode, toggle mode
- > Tri-color LED status display
- > Ultra low power consumption (wireless keypad≤10uA, Wireless Exit Button: ≤6uA)

### Specifications

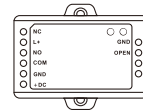
<b>User Capacity</b>	<b>500</b>
PIN Length	4~8Digits
Card Type	125KHz EM Card
<b>Operating Voltage</b>	
Wireless Keypad	3units of AAA batteries
Mini Controller	12V DC ±20%
Wireless Exit Button	1unit of 2023 Lithium battery
<b>Current</b>	
<b>Idle Current</b>	Wireless Keypad: ≤10uA Mini Controller: ≤20uA Wireless Exit Button: ≤6uA
<b>Working Current</b>	Wireless Keypad: ≤50mA Mini Controller: ≤40mA Wireless Exit Button: ≤5mA
<b>Communication Frequency</b>	<b>2.4G</b>
<b>Communication Distance</b>	<b>15m Maximum</b>
<b>Relay Contact Load</b>	<b>2Amp Maximum</b>

<b>Environment</b>	<b>Indoor</b>
Operating Temperature	-20℃~60℃ (-4℉~140℉)
Operating Humidity	0%~86%RH
<b>Physical</b>	<b>ABS Shell</b>
Dimensions	Wireless Keypad: L135 × W54 × D19(mm)
	Mini Controller: L65 × W54 × D19(mm)
Unit Weight	Wireless Exit Button: L83 × W40 × D16(mm)
	Wireless Keypad: 90g
	Mini Controller: 40g
Wireless Exit Button: 30g	
Shipping Weight	250g

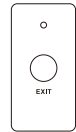
### Carton Inventory



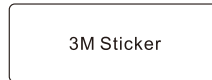
Wireless Keypad



Mini Controller



Wireless Exit Button



3M Stickers



Diode 1N4004 (For relay circuit protection)



Self Tapping Screws: Φ3 X 25mm



Wall Anchors



Screw Driver



Screw Driver

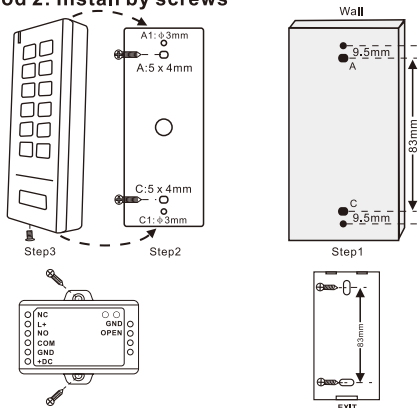
## INSTALLATION

**Attention:** there is a battery spacer inside the Wireless Exit Button, please take it off before installation.

### Method 1: Stick by 3M stickers

The device packed with 3M double-side Stickers, can easily stick the Wireless Keypad and Mini Controller and Wireless Exit Button on Metal door, Glass Door, Wooden Door, or Smooth Wall.

### Method 2: Install by screws

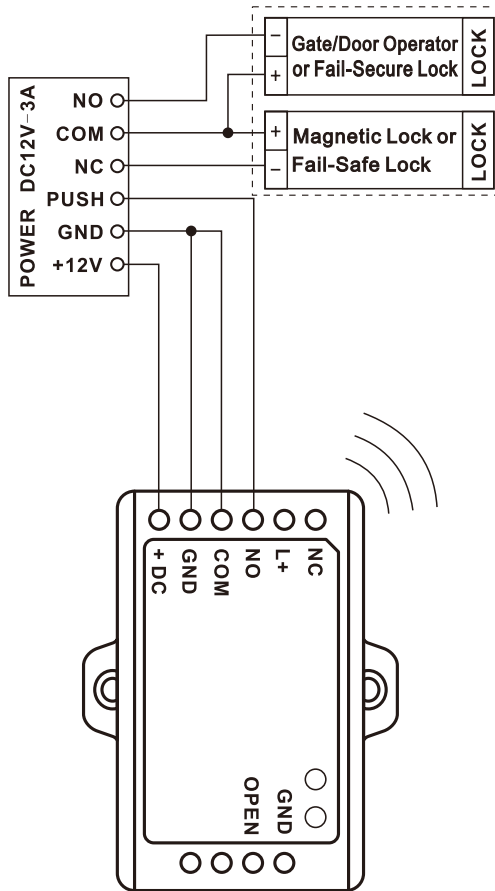


## Sound and Light Indication

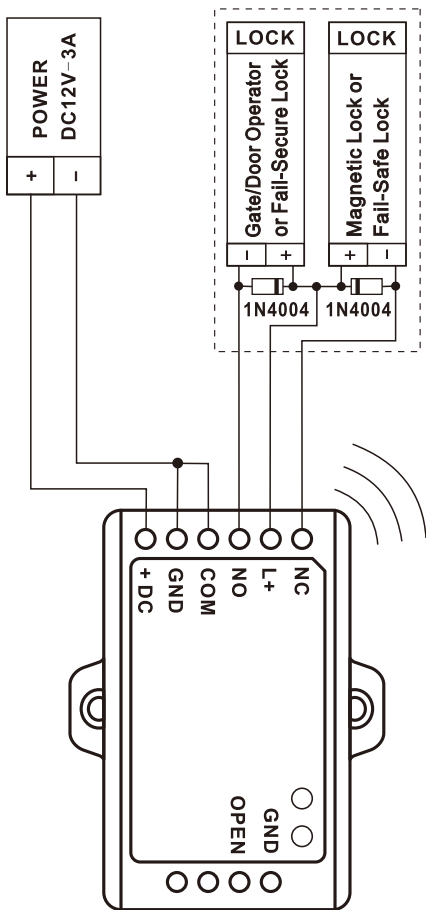
Operation Status	Red LED	Green LED	Buzzer
Standby	—	—	—
Unlock the lock	—	ON for 3 seconds	One beep
Key press under Program mode	—	—	One beep
Enter into Program mode	Shines per 1.5 seconds	—	One long beep
Invalid PIN	—	—	—
Exit from the Program mode	—	—	One beep
Low battery reminding (Keypad)	Orange LED ON	—	Three beeps
Low battery reminding (Exit button)	Shines from Red to Green twice	—	—

## Connection Diagram

Access Control Power Supply:



## Common Power Supply:



## PROGRAMMING

### Enter and Exit Program Mode

Programming Step	Keystroke Combination
1. Enter Program Mode	<b>*</b> (Master Code) # (Factory default is 123456)
2. Exit	<b>*</b>

### Set Master Code

Programming Step	Keystroke Combination
1. Enter Program Mode	<b>*</b> (Master Code) #
2. Update Master Code	<b>0</b> (New Master Code) # (Repeat New Master Code) # Master code is any 6 digits
3. Exit	<b>*</b>

### Add User PIN(s)

User ID: 0~499

PIN length: 4~8 digits

Programming Step	Keystroke Combination
1. Enter Program Mode	<b>*</b> (Master Code) #
2. Add PIN	<b>1</b> (User ID) # (PIN) # (Repeat PIN) # The users can be added continuously
3. Exit	<b>*</b>

### Add User Card(s)

User ID: 0~499

Card type: 125 KHz EM card

Programming Step	Keystroke Combination
1. Enter Program Mode	<b>*</b> (Master Code) #
2. Add Card: Using Auto ID (Allows SK3-II to assign Card to next available User ID number)	<b>1</b> (Read Card) # The cards can be added continuously.
<b>OR</b>	
2. Add Card: Select Specific ID (Allows Master to define a specific User ID to associate the card to)	<b>1</b> (User ID) # (Read Card) #
3. Exit	<b>*</b>

## Change PIN Users

Programming Step	Keystroke Combination
<b>Note: Below is done outside programming mode, users can undertake this themselves</b>	
2. Change PIN: By Card (There will auto allocate PIN(8888) to cards when adding) <b>OR</b> 2. Change PIN: By PIN	<b>* (Read Card) (Old PIN) # (New PIN) # (Repeat New PIN) #</b>  <b>* (User ID) # (Old PIN) # (New PIN) # (Repeat New PIN) #</b>
3. Exit	<b>Exit automatically</b>

## Delete Users

Programming Step	Keystroke Combination
1. Enter Program Mode	<b>* (Master Code) #</b>
2. Delete user <b>OR</b> 2. Delete Card <b>OR</b> 2. Delete all users	<b>2 (User ID) #</b> The users can be deleted continuously  <b>2 (Read Card) #</b>  <b>2 (Master Code) #</b>
3. Exit	<b>*</b>

## Set Access Mode

Programming Step	Keystroke Combination
1. Enter Program Mode	<b>* (Master Code) #</b>
2. PIN Access <b>OR</b> PIN + Card Access <b>OR</b> PIN or Card Access	<b>3 0 #</b>  <b>3 1 #</b>  <b>3 2 # (factory default)</b>
3. Exit	<b>*</b>

## Set Relay Configuration

The relay configuration sets the behavior of the output relay on activation.

Programming Step	Keystroke Combination
1. Enter Program Mode	<b>* (Master Code) #</b>
2. Pulse Mode  <b>OR</b> Toggle Mode	<b>4 (1-99) #</b> (factory default) The relay time is 1-99 seconds. (1 is 50mS.) (Default is 5 seconds)  <b>4 0 #</b> Set the relay to ON/OFF Toggle mode
3. Exit	<b>*</b>

## Set Safety Mode

In safety mode, it can be set to deny access for 10 minutes after 10 failed PIN/Card attempts in 10 minutes (Factory default is OFF)

Programming Step	Keystroke Combination
1. Enter Program Mode	<b>* (Master Code) #</b>
2. Strike-Out OFF <b>OR</b> Strike-Out ON	<b>6 0 # (factory default)</b>  <b>6 1 #</b>
3. Exit	<b>*</b>

## Set Buzzer

Programming Step	Keystroke Combination
1. Enter Program Mode	<b>* (Master Code) #</b>
2. Buzzer OFF <b>OR</b> Buzzer ON	<b>7 0 #</b>  <b>7 1 # (factory default)</b>
3. Exit	<b>*</b>

## OTHERS

### Users Operation

Programming Step	Keystroke Combination
PIN User Access	(PIN) #
Card User Access	# (Read Card)
PIN + Card User Access	# (Read Card) (PIN) #

## Pair Wireless Keypad / Exit Button and Mini Controller

- 1) They all are already paired when out of factory, if no problem, the users do not need to do this operation in using.
  - 2) One Mini Controller can be connected by five pcs of Wireless Keypad and Exit Button maximum.
- To pair the Wireless Keypad and Mini Controller:  
**Wireless Keypad:** \* Master Code # 9 0 #  
**Mini Controller:** Remove the back cover, and press the button "Pair"  
If pair successfully, there will be one beep from both the controller and the keypad; if not, there will be three short beeps, then please repeat the setting. The keypad does not need to be entered \* to exit from this step.

- To pair the Wireless Exit Button and Mini Controller:  
**Wireless Exit Button:** Remove the back cover, and press the button "Pair"  
**Mini Controller:** Remove the back cover, and press the button "Pair"  
If pair successfully, there will be one beep from both the controller and the exit button; if not, there will be three short beeps, then please repeat the setting.

- Pair two pcs of Wireless Keypad and Mini Controller---Optional  
(This is optional solution for users, the extra wireless keypad Does Not included in the packing list)

**Wireless Keypad 1:** \* Master Code # 9 0 #

**Wireless Keypad 2:** \* Master Code # 9 0 #

**Mini Controller:** Remove the back cover, and press the button "Pair"

If pair successfully, there will be one beep from both the controller and the keypads; if not, there will be three short beeps, then please repeat the setting. The keypads does not need to be entered \* to exit from this step.

### Reset to Factory Default

Open the back cover of the wireless keypad, press the button "RST" on the main board, hold it for 5 seconds, release it until hear a long beep, means reset to factory default successfully.

After that, all settings except the relay time will be

back to factory defaults, **the users' information will still be retained.**

At the meanwhile, please pair the wireless keypad and wireless exit button with the mini controller again.

### Low Battery Reminding

- With 3 pieces 3A(AAA) battery, the wireless keypad can work continuously for at least 1 year, basing 30 times PIN/card input a day.  
If low battery of the wireless keypad, there will be 3 beeps when every key is pressed, and the LED will stay in Orange, then please replace the batteries within one week.
- With 2023 lithium battery, the wireless exit button can work continuously for at least 1 year, basing 30 times press a day.  
If low battery of the wireless exit button, the LED will shine from Red to Green twice, please replace the battery within one week.

SK3-II- Simplified Instruction	
Function description	Operation
Enter the Program Mode	* (123456) # then you can do the Program (123456 is the factory default master code)
Change the Master Code	0 (New Code) # (Repeat New Code) # (code: 6 digits)
Add PIN user	1 (User ID) # (PIN) # (Repeat PIN) #
Add Card User	1 (Read Card)
Delete User	2 (User ID) # 2 (Read Card)
Exit from the Program Mode	*
How to release the door	
PIN Access	PIN #
Card Access	# (Read Card)
PIN + Card Access	# (Read Card) (PIN) #